



END OF YEAR REPORT

DECEMBER 2023

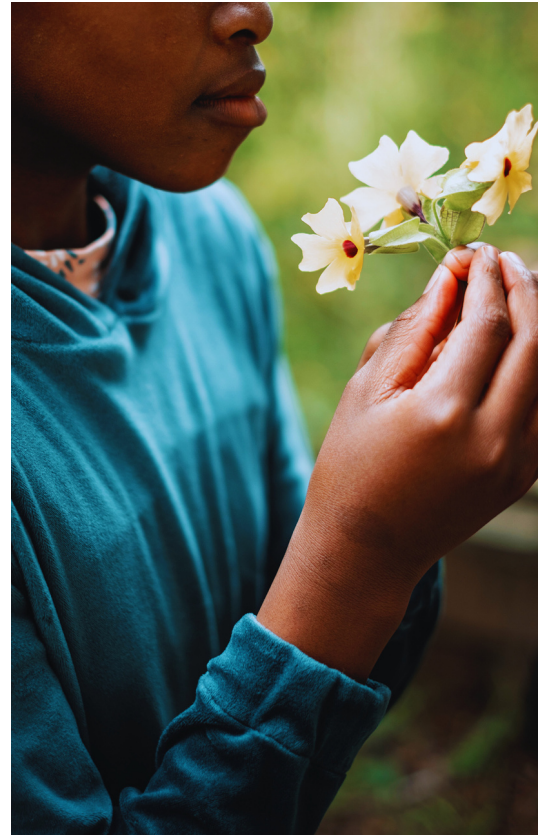
Dear Home from Home Family

Recently, a supporter of Home from Home spoke about the multitude of issues plaguing the world, specifically in South Africa, and the challenges faced by the youth and children. They posed a question: "What is it that enables you to find hope, both for humanity and in the specific work you are doing?" We are pleased to say that the answer is abundantly clear to us.

Our children continuously exude the hope and potential that exists within humanity. Despite their experiences of rejection, neglect, and countless traumatic events, the miracle is that their humanity is still so present. Add to this the remarkable Foster Mothers who are able to create this second chance of a real loving family for children who are not even biologically linked, and an environment where they can flourish and grow, is created.

This is the hope for our work and humanity.

Our blessing is that we are at the coalface of where this hope and presence of God are clearly visible.



“

REMARKABLE FOSTER
MOTHERS WHO ARE
ABLE TO CREATE THIS
SECOND CHANCE OF A
REAL LOVING FAMILY
FOR CHILDREN

LONG TERM STRATEGIC PLANNING

With the leadership transition in 2019 and the Covid pandemic that followed, the organisation was unable to create a long-term strategic plan. However, a significant accomplishment in the past eighteen months has been the establishment of a three-to-five-year plan for the organisation.



Although sustainability is always important, Home from Home's future plans must also address the expansion of our services to reach more vulnerable children. In South Africa, where there are over a million children in need of care and still awaiting placement, it is crucial to grow an effective model. Therefore, Home from Home's growth will focus on the following key areas:



TRANSITION SUPPORT PROGRAMME

Over the past four years, we have been grateful for the opportunity to establish a Transitional Support Programme. This programme operates in three main areas:

- 1) Preparing over 50 young adults aged 16 and older in our homes for their transition out of care.
- 2) Providing three Transition Homes, including our newly opened third location in Stellenbosch, for those who have nowhere to live after leaving foster care.
- 3) Offering support to 24 young adults who currently live independently from their foster homes but still require assistance as they navigate towards full independence.

In a country where the unemployment rate for young adults sits at approximately 60% and the risks of gangsterism, crime, and drug use are at alarming levels, additional support in this area is crucial. The fact that 8 out of the 11 young adults in our Transition Homes are actively involved in further education, training, employment, or internships, with the remaining 3 actively seeking employment, showcases the positive impact of our Transitional Support Programme. With more of our children reaching this transition phase in their lives consequently, we strongly believe that further development of this intervention is necessary.



**8 OUT OF THE 11 YOUNG ADULTS IN
OUR TRANSITION HOMES ARE
ACTIVELY INVOLVED IN FURTHER
EDUCATION, TRAINING,
EMPLOYMENT, OR INTERNSHIPS**

EDUCATION SUPPORT PROGRAMME

In South Africa, the gap in educational standards between the wealthy and those in regular communities continues to widen. A recent study revealed that a staggering 81% of grade 4 learners in the country struggle with reading comprehension. Additionally, a considerable 25% of children drop out of school before completing their education. In light of these distressing statistics, it is uplifting to note that none of the Home from Home children discontinued their education in the past year, and only two have done so in the past six years. This achievement can be attributed to our Educational Support Programme, which has established successful partnerships with organisations such as Orange Art Project, Surfpop, Oxford Reading Safari, and Preeva Tutoring. However, given the limited resources available to the schools our children attend, there is a pressing need for further growth in our educational support. Our ultimate objective is to provide children from regular communities and schools with access to excellent education that will equip them with a competitive advantage in the highly challenging job market.



STAFF TEAM CAPACITY

As we expand our services for children, it is necessary to enhance our team's capacity. Each department has devised its own strategies for achieving this objective. We are delighted to share that the Department of Social Development has approved the addition of another Social Worker position within the Programme Team, which provides direct support to foster families. We have consequently hired a new Senior Social Worker who will oversee the Social Worker team. This is an exciting development that will allow Vicky Smith (Programme Manager) to dedicate more time to the significant programme development efforts of the Transitional and Educational Support programmes mentioned earlier.



ASSOCIATE & PARTNERSHIP RELATIONSHIPS

The partnership relationships we have and can develop are essential for our sustainability and growth. From the beginning, we partnered with 'Associates' to help us run our foster homes. These Associates share in the responsibility of running the homes, with their specific responsibilities outlined in regularly reviewed Memorandums of Agreement (MOA). Currently, we are reviewing and renewing these MOAs.

Additionally, we have formed Partner relationships with service providers and other organisations doing similar work. These service providers become 'partners' by finding ways to provide their services to us at a reduced cost or, in some cases, at no cost (such as our partnership with Orange Art Project). We also actively seek out other organisations working with children and youth to partner with us in providing services for our children. Developing our partnerships with Associates, other organisations, and service providers is a key part of our long-term strategy for sustainability and growth.

SUMMARY

As we approach the end of another year at Home from Home (soon to be celebrating our 19th), we reflect on the challenges and triumphs we have faced in our mission to support children and young people. We are grateful for the opportunity to continue this important work and have exciting plans for the future. With the help of God, we aim to enhance our impact and reach to even more children in South Africa who are in desperate need.

To our Home from Home Family, we express our sincere gratitude for making this work possible. May the festive season bring you close to your loved ones, and may you find satisfaction in the knowledge that your efforts contribute to a better world.

THANK YOU TO EVERYONE WHO SUPPORTED ALL OF OUR FUNDRAISING
EVENTS IN SUPPORT OF THE CHILDREN IN OUR CARE

THE
RANGE ART
SUMMER
EXHIBITION



ARTSCAPE THEATRE
09 DECEMBER 2023 -
04 JANUARY 2024
08H00 - 22H00



10TH ANNUAL HOME FROM HOME AMBLE



ROYAL PARKS HALF MARATHON



TWO OCEANS MARATHON



CAPE TOWN CYCLE TOUR